










Cone 6 Firing Results – April 2021 – Cone 6, Oxidation, 10 minute hold, Quyle Sandstone Buff clay body

Ceramic piece	Detail	Glaze Info
 <p data-bbox="159 701 688 730">Ceramic Boat –16” long x 8” wide, 2.5” deep</p>		<p data-bbox="1419 233 1516 548">Amaco Indigo Float Chun Plum over hands, down center</p>
 <p data-bbox="159 1171 688 1201">Ceramic Boat –18” long x 8” wide, 2.5” deep</p>		<p data-bbox="1419 737 1516 1444">Black Unerg laze, brushe d on, wiped off, True Celedo n in middle over design, Chun Plum at outer edges with some overlap</p>
 <p data-bbox="159 1906 688 1936">Ceramic Boat –18” long x 8” wide, 2.5” deep</p>		<p data-bbox="1419 1451 1516 1978">Inside & out: my Opales cent Green. Black unerg laze brushe d on and wiped off outside</p>

		Rim & stamped medallions: Saturated Gold
	Boat underside showing coil design	
 <p data-bbox="159 1318 690 1354">Ceramic Boat –18” long x 8” wide, 2.5” deep</p>		Black underglaze brushed on design, wiped off. Rainforest Green down grape design, Iron Luster outer edges, some overlap



Dish – 12" long x 6" wide



Black underglaze brushed on design, wiped off. True Celadon overall, Chun Plum at top edge, Iron Luster on bottom edge



Dish – 12" long x 6" wide



Black underglaze brushed on design, wiped off. Albany slip on lower half – Woo Yellow on top with some overlap



Large Bowl- 16" diameter, 5" deep



Black underglaze brushed on design, wiped off. Rainforest Green on texture, Center Wool Yellow overlapping texture, Ancient Copper on the Rim



Medium Bowl - 9" diameter, 4" deep



In and out Iron Luster, Oatmeal on Rim, splash Blue Rutile in center



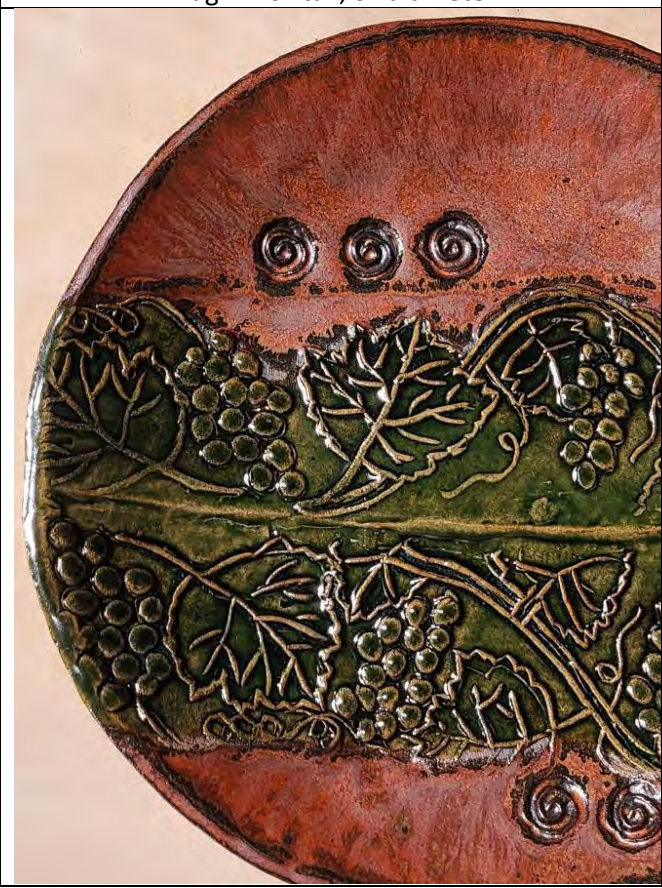
Mug 1 – 6" tall, 3" diameter



Mug 2 – 6" tall, 3" diameter

Mug 1 = Albany slip inside and 1/2 down outside, Indigo Float on bottom half.

Mug 2 = Albany slip inside and 1/2 down outside, Oatmeal on bottom half.



Black underglaze brushed on design, wiped off, Rainforest Green, Ancient Copper over rest.

Plate 1 – 14" diameter



Black underglaze brushed on design, wiped off, Ancient Copper over rest.

Plate 2 – 14" diameter



Test Tile Dish 1



Test Tile Dish 2

Test Tile Dish 1: 1/2 & 1/2 in and out, Iron Luster and Opal Green Splash Indigo Float

Test Tile Dish 2: 1/2 & 1/2 in and out, Ancient Copper, Oatmeal

Splash
Blue
Rutile

NOTE:
on
these
dishes,
the 1st
listed
glaze
applied
first,
the 2nd
glaze
listed is
applied
second
with
some
overlap
over
the
first.



Test Tile Dish 3



Test Tile Dish 4

Test
Tile
Dish 3
=
½ & ½
in and
out
Iron
Luster,
Blue
Rutile

Test
Tile
Dish 4
=
½ & ½
in and
out
Obsidia
n,
Textur
ed
Turquo
ise



Test Tile Dish 5



Test Tile Dish 6

Test
Tile
Dish 5
=
½ & ½
in and
out
Smoke
y
Merlot,
Woo
Yellow

Test
Tile
Dish 6
=
½ & ½
in and
out
Ancien
t
Copper
,
Chun
Plum,
Splash
Oatme
al in
center



Test Tile Dish 7



Test Tile Dish 8

Test
Tile
Dish 7
=
½ & ½
in and
out
Temmo
ku
Blue
Rutile
Temmo
ku
Runny

Test
Tile
Dish 8
=
½ & ½
in and
out
Deep
Firebric
k,
White
Liner
Splash
Blue
Rutile



Test
Tile
Dish 9
=
½ & ½
in and
out
Albany
Slip,
White
Liner
Splash
Indigo
Float